



University of Applied Sciences and Arts Northwestern Switzerland  
School of Life Sciences



## International Student Guide

# Dear International Student

Welcome to Switzerland and the FHNW School of Life Sciences! We are very pleased that you decided to do your studies at our school.

Studying abroad requires preparation and organisation and presents many questions. This guide provides helpful information and hopefully answers the questions you have before getting here, when you arrive and during your stay.

We wish you a great and memorable time in Switzerland and look forward to meeting you soon!



## **Sarah Lehmann & Irina Hauri**

International Office  
FHNW School of Life Sciences

E [international.lifesciences@fhnw.ch](mailto:international.lifesciences@fhnw.ch)

P +41 61 228 50 66

↗ [Website](#)

## Life in Basel

How to get around  
By car  
By tram, bus & train  
By bike  
Where can I go shopping in the Basel area?  
Where do I buy groceries?  
Looking for a souvenir from Basel?  
Go shopping across the border in Germany or France?  
Where to eat & drink in Basel?  
Where to eat & drink across the border?  
What can I do in my free time?  
Enjoy the summer at its best  
Wrap up in the autumn and winter months  
Good to know



## Getting here

Basel – what to expect?  
How do I get here?  
Weather – what to wear?  
Which languages are spoken?  
What's the currency and the cost of living?  
Do I need a visa?  
How do I register?  
Do I need health insurance?  
What do I do in case of an emergency?  
How can I find accommodation?

## Student life

Where will I study?  
How do I get there?  
IT Services  
Library  
Medical assistance on Campus  
Where can I study?  
How to print?  
Lockers  
Smoking areas  
Food and Drink on Campus  
Food and Drink around the Campus  
FHNW Sports  
FH-Card  
Good to know

**Appendix** | Useful Addresses  
Map  
Useful Links  
Checklist



# Getting here

1



## Basel — what to expect?

In Basel, culture is lived, created, promoted and celebrated. Whether on a tour of one of the nearly 40 museums, a visit to the Musical Theatre or a long night at an open air festival, nowhere in Switzerland can culture be experienced in such a diverse way. The old town is one of the most intact and beautiful in Europe. The narrow alleys and hidden squares with over 300 fountains make it just as special as the many centuries-old buildings and eye-catching views.

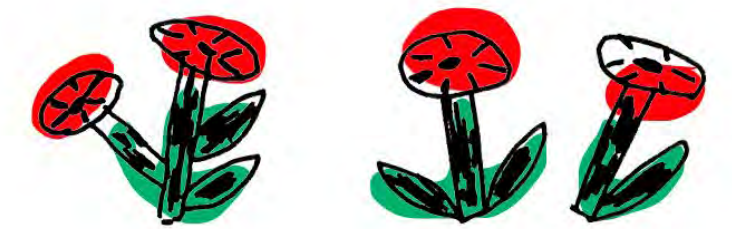
Basel is the third largest city in Switzerland after Zurich and Geneva, and borders France and Germany. This 'Dreiländereck' is a unique meeting point of three countries, languages and cultures.

In summer, life shifts outdoors and the banks of the Rhine are transformed into a Mediterranean promenade with numerous cafés and bars while in winter the Basel Christmas market, one of the most beautiful in Europe, is a big attraction.

Basel Tourismus: ↗ [Website](#)

## How do I get here?

Basel is well connected and easily accessible thanks to its location. The EuroAirport is located just a few minutes outside the city centre. Three train stations offer excellent connections all over Switzerland and to the most important cities in Europe.



## Weather — what to wear?

Basel has an extremely favourable climate. The sun shines for about 3,500 hours a year and the average rainfall is only 90mm per month. The maximum temperature can rise to more than 35°C in summer but the moderate humidity is always very pleasant. In the winter months, warm clothing, waterproof jackets and good shoes are a must. It is often damp and cold and it can snow from time to time.



# Which languages are spoken?

Switzerland is a multilingual country with four national languages. The most widely spoken is Swiss German, the others being French, Italian and Romansh. The many foreign citizens living in Switzerland also contribute to the linguistic diversity.

Swiss German is spoken in Basel and is referred to as 'Schwiizerdüütsch'; it sounds very different from German. Swiss German is used for speaking, while German is used in writing.

Some important words and phrases that you will often hear in Switzerland:



## English

## German

## Swiss German

Hello

Guten Tag

Grüezi

Goodbye

Auf Wiedersehen

Adieu

Yes

Ja

Jo

No

Nein

Nei

Please

Bitte

Bitte

Thank you!

Danke

Danggschön

My name is...

Mein Name ist...

Mi Name isch...

How are you?

Wie geht es Dir?

Wie goht's?

I'm very well

Es geht mir gut

Es goht mir guet

I feel ill

Es geht mir schlecht

Es goht mir schlächt

Do you speak English?

Sprechen Sie Englisch?

Rede Si Änglisch?

I don't understand

Ich verstehe nicht

Ich verstoh nid

Where is ...?

Wo ist...?

Wo isch ...?

Toilets/restrooms

Toilette

WC

# What's the currency and the cost of living?

Switzerland's official currency is the Swiss Franc (abbreviations are Fr., Sfr. or CHF). Credit cards are accepted almost everywhere but it is still quite common to pay in cash.

Basel is an attractive city and a great place to live but unfortunately not cheap. CHF 1,500 – 2,000 per month should cover the costs for housing, food, transport and entertainment.



# Do I need a visa?

In order to enter Switzerland to study, a visa is required by most non-EU/EFTA citizens. It can take up to 3 months from the application until a visa is actually issued. It is your responsibility to apply for an appropriate visa within a reasonable timeframe. Citizens from Europe's Schengen area, the European Union and EFTA do not require visas to enter Switzerland but must apply for a residence permit.

Please do NOT enter Switzerland with a tourist visa, as this cannot be changed to a student residence permit after you arrive. If you do not have a visa when you arrive in Switzerland, you will have to leave the country and reapply!

To find out if you need a visa, check the ↗ [Website](#).



# How do I register?



If your stay is shorter than 90 days, you do not need to register with the local authority. For stays between 90 and 120 days in Basel-City (BS): No personal registration is required; however, you must apply for a “Confirmation of Stay” (Zusicherung) via email to the Migration Office: [migrationsamt@jsd.bs.ch](mailto:migrationsamt@jsd.bs.ch)

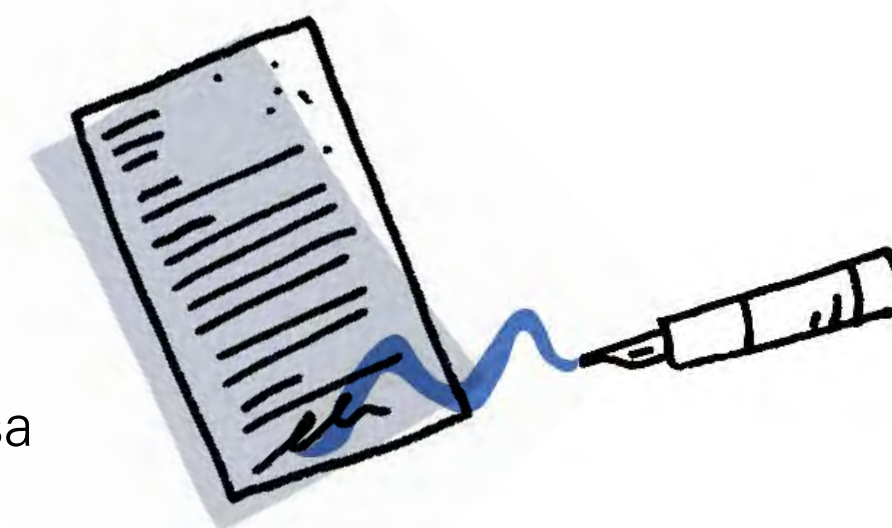
For stays longer than 90 days in all other cantons (e.g., Basel-Country/ MuttENZ) or more than 120 days in Basel-City: Registration is mandatory within 14 days of arrival at the registration office of your municipality:

**Basel** ↗ [Website](#)

**MuttENZ** ↗ [Website](#)

**Riehen** ↗ [Website](#)

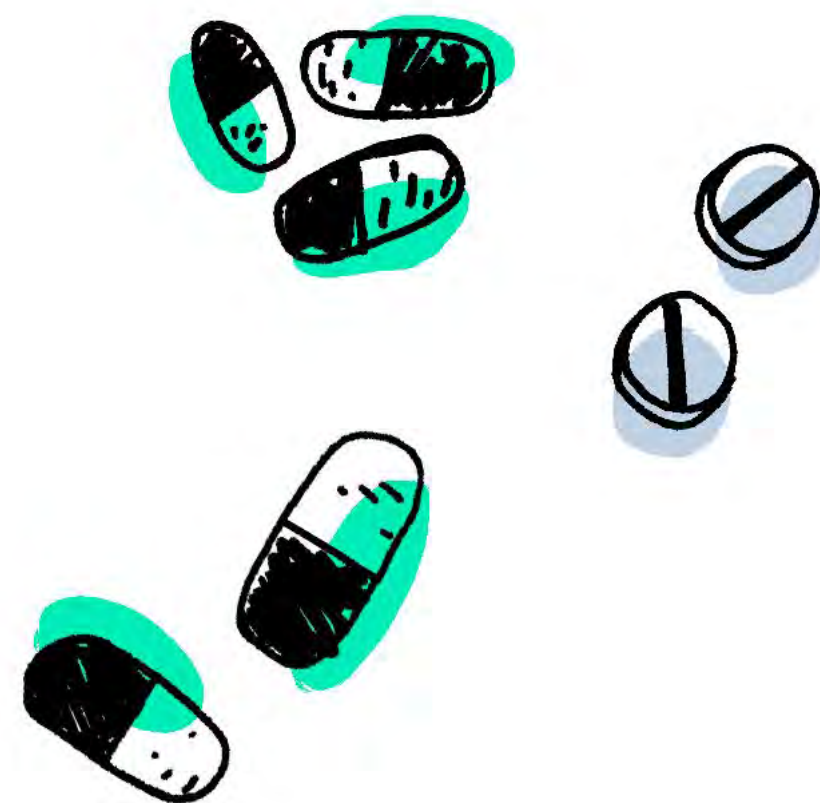
Exception: If your visa states “Visa is also valid as residence permit. No registration with the municipality required”, you do not need to register separately.



The following documents will be required for your registration:

- Completed registration form (on the relevant websites or from the registration office)
- Valid passport or identity card
- ID picture (35 x 45 mm), not older than 6 months
- Admission Confirmation from FHNW
- Proof of means of subsistence (bank statement or signed letter from parents/family confirming their financial support)
- Rental contract of your accommodation

At the end of your stay in Switzerland, you must notify the municipality of residence that you are leaving the country. They will then cancel the residence permit. ↗ [Website](#)



## Do I need health insurance?

Basic health insurance is compulsory in Switzerland. If you come to live in Switzerland for more than 90 days, you must take out health insurance within three months of your arrival. However, as an international student, special provisions might apply to you and depending on your situation, an exemption is possible:

- General information about compulsory health insurance (Gemeinsame Einrichtung KVG).  
↗ [Website](#)
- Application for exemption:  
↗ [Website](#)

# What do I do in case of an emergency?

For minor emergencies or medical problems, you can go to the Medbase Toujours medical center in Basel or Pratteln that is also open on evenings and weekends (no appointment required). These clinics are open 365 days a year. An experienced staff of general practitioners and internists with top-class equipment can diagnose and treat most non-hospital conditions. Both locations are close to the train stations in Basel and Pratteln.

↗ [Website](#)

In Switzerland, you should not go to Accident and Emergency at a hospital unless you are severely ill, your condition is life threatening or you have been in a serious accident.

## Emergencies

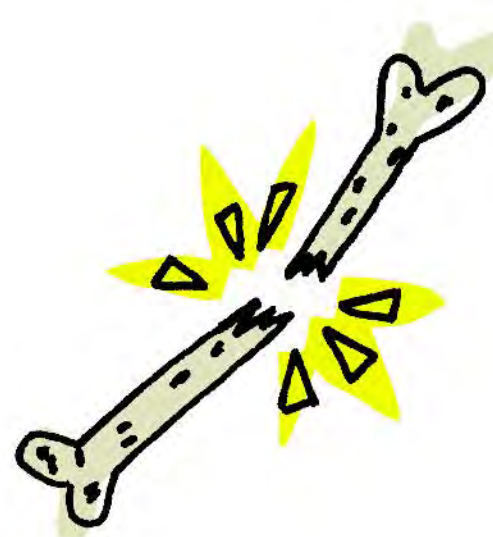
Universitätsspital Basel  
Spitalstrasse 21/Petersgraben 4  
4031 Basel

↗ [Website](#)

## For dental emergencies

There is a dental clinic near the SBB station, which is also open in the evenings and at weekends.

↗ [Website](#)



## Important emergency phone numbers

Emergency number: 112

Police: 117

Fire brigade: 118

Ambulance: 144

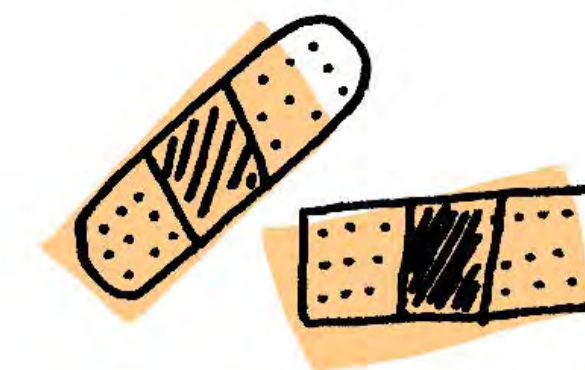
Toxicology Emergency Centre: 145

## Pharmacies

For minor medical problems, it is best to go to a pharmacy (Apotheke) first, as they can often diagnose a problem right away and provide appropriate treatment. In Basel and MuttENZ there are plenty of pharmacies, open 8:30–18:30 on workdays. The following also have extended opening hours:

– Bahnhof Apotheke Drogerie  
Centralbahnstrasse  
Bahnhof 20  
4051 Basel

– Notfall Apotheke Basel  
Petersgraben 3  
4031 Basel  
Open during the night





## How can I find accommodation?

Swiss universities do not usually have on-campus accommodation so students often organise their own shared flats („WG“ or „Wohngemeinschaft“), where people rent a flat together and share the rent. As in other cities, the housing market in Basel is tight so start looking for suitable accommodation early!

### **WoVe**

We recommend contacting WoVe, the local student housing association that helps students find affordable accommodation. You can register for furnished or unfurnished rooms on the WoVe website, by email or in person.

↗ [Website](#)

### **UNIMARKT**

Online marketplace of the University of Basel. ↗ [Website](#)

### **WGZIMMER.CH**

Are you looking for a room in a shared flat? ↗ [Website](#)



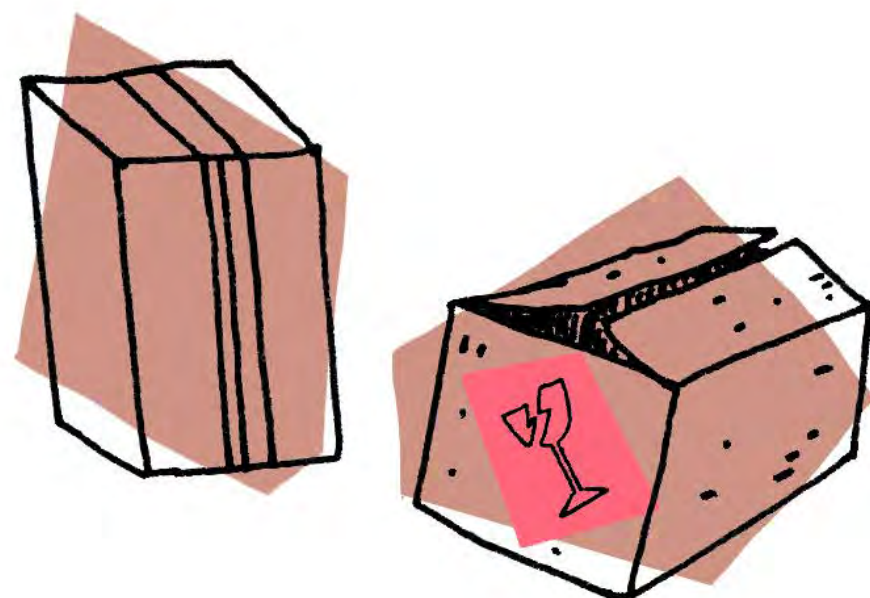
### **Basel Student Residence Cooperative**

The Student Residence offers 99 single rooms. First priority is given to students of the University of Basel or to students of other universities. ↗ [Website](#)

### **Katholisches Studentenheim**

The Katholisches Studentenheim offers affordable accommodation to 70 students. ↗ [Website](#)

For a furnished or unfurnished single room with shared kitchen and bathroom, you should expect to pay CHF 400–900 a month.





# Life in Basel

2



## How to get around

In Basel people like to get around on foot, or by bike, tram or bus. Public transport in Basel and around Switzerland is safe, efficient and reliable and trains, trams, buses and boats cover the entire country. Daily services operate from 5:30 to midnight and run every 6 minutes at peak times. For an additional fare, special night buses get you home late on Friday and Saturday nights. The Basel ticketing system and the different travelcards might be overwhelming at first. Cantons Basel-Stadt and Baselland are divided into zones and the price of your ticket depends on how many zones you cross to reach your destination. But don't worry! Go to the Tourist Information Desk at the SBB train station and ask for advice on how to get around and which travelcard to buy that fits your needs.

Note: Campus Muttenz is part of "Zone 10".



## By car

People from abroad may drive in Switzerland for private purposes for up to a year as long as they are old enough to drive in Switzerland (e.g. 18 years old to drive a passenger car) and hold a valid national or international driving licence. If no international driving permit (which serves as a translation of the original licence) can be presented with the original national driving licence, the driver must carry a translation of their national driving licence.

↗ [Website](#)

# By tram, bus & train

## **Tickets**

Tickets can be purchased at the green (tram & bus) or blue (train) ticket machines located at every stop (NB: some machines only accept coins). There is also a ticket app (SBB Mobile) that allows you to buy tickets quickly and easily.

↗ [Website](#)

## **The U-Abo**

This ticket is great if you use public transport in the Basel region. It allows holders to travel throughout the entire TNW region whenever and wherever they wish. It even includes travelling to certain places in Germany and France that are close to the border.

More information on prices and how to buy:

↗ [Website U-Abo Subscription](#)

↗ [Website Purchasing a U-Abo](#)

## **Half-Fare Card**

If you want to travel around Switzerland a lot during your stay then buying the Half-Fare Card could make sense. With this, you get your train ticket for half price. You also benefit from discounts on many other trains, ships, trams and buses. ↗ [Website](#)

## **The Night GA Travelcard**

If you are under 25 and like to go out in the evening, you could benefit from the Night GA Travelcard. Buying this gives under-25s free travel on SBB trains and most other railways as well as on many forms of public transport in Switzerland from 7pm. ↗ [Website](#)

More information on costs, timetables or ticket purchasing Swiss Federal Railways (SBB):  
↗ [Website](#)

Basler Verkehrs-Betriebe (BVB):  
↗ [Website](#)

Note: In almost all cases, tickets must be purchased before boarding trains and buses. Not doing so generally carries a fine of at least CHF 100.

## By bike

Basel is a cycling city: there are many cycle lanes and paths that make cycling safe and pleasant. Travelling by bike is a good alternative to public transport.



### Second-hand bikes

If you want to buy a second-hand bicycle („Velo“ in Swiss German), the following online marketplaces can help:

- Basel University buy & sell  
↗ [Website](#)
- Ricardo.ch ↗ [Website](#)
- Tutti.ch ↗ [Website](#)
- Velomarkt.ch ↗ [Website](#)

You can also visit one of the following shops in Basel:

- Bike Outlet ↗ [Website](#)
- Zweifach – second hand bikes and fashion ↗ [Website](#)

### Bike rental

Only need a bike from time to time to get around Basel and the surrounding area? You can choose from several providers for the rental of bicycles, e-bikes or e-scooters.

- Pick-e-Bike ↗ [Website](#)
- Rent a Bike ↗ [Website](#)
- E-Scooter in Basel  
↗ [Website](#)  
↗ [Website](#)  
↗ [Website](#)

Please note that taking your bike on trams, buses and trains is only allowed with a valid bike ticket, which you have to buy at the ticket office. Otherwise you will be fined over CHF 100.

# Where can I go shopping in the Basel area?

Basel is a shopper's paradise with a wide range of stores – but unfortunately not cheap! The old town has large department stores, speciality shops, small boutiques and design shops. Along the Freie Strasse to Marktplatz you will find a variety of clothes and book shops, as well as drugstores and more. If you prefer to have everything under one roof, the St. Jakob Shopping Center offers a good selection.

St. Jakob Park Shopping Center  
St. Jakobs-Strasse 397, 4052 Basel  
↗ [Website](#) (in German).

Shop opening hours are generally from 09:00–18:30 Monday to Friday and 08:00–17:00/18:00 on Saturday. Shops in central Basel stay open until 20:00 on Thursday and Friday. Most shops are closed on Sunday except for the railway station shops and shops at petrol stations. Smaller shops and those outside the city centre may also close over lunch.

## Second-hand shops

You like second-hand shops and are looking for something for a smaller budget? Maybe you'll find what you're looking for here:

- Chemiserie  
Kybeckstrasse 50, 4057 Basel  
↗ [Website](#)
- Sahara Secondhand  
Gerbergasse 20 (1st floor),  
4001 Basel  
↗ [Website](#)
- Fizzen  
Pfluggässlein 1, 4001 Basel  
↗ [Website](#)

## Charity shops

There are also good charity shops in Basel and MuttENZ where you can find second-hand furniture, clothes and household items. These are some but there are many more:

- Blaukreuz-Brockenhalle  
Leimgrubenweg 9, 4053 Basel  
↗ [Website](#)
- HIOB Brockenstube  
Klybeckstrasse 91, 4057 Basel  
↗ [Website](#)
- BROCKINO  
Breisacherstrasse 45, 4057 Basel  
↗ [Website](#)

## Where do I buy groceries?

The largest and most common supermarket chains are Coop, Migros and Denner. In Coop ('Supercard') and in Migros ('Cumulus' card) there are customer cards with which you can get discounts or other benefits when shopping. They will ask if you have one, but you don't need it to shop there. Migros does not sell alcoholic drinks or tobacco.

There are many other food and speciality shops in Basel and the surrounding area. The best thing to do is to find out about them in your area or look on the internet for shops that interest you.



## Looking for a souvenir from Basel?

### Basler Lächerli

Sweets with freshly ground almonds and hazelnuts, honey and fine spices. Shops in Basel: Gerbergasse 57 / Greifengasse 2 / Bahnhof SBB  
You can also visit the exhibition in the Lächerli Huus factory and taste different sweets! ↗ [Website](#)

### Läderach Schokolade

FrischSchoggi (fresh chocolate) or pralines? Shops in Basel: Marktplatz 18 / Greifengasse 36 / Bahnhof SBB. ↗ [Website](#)



## Go shopping across the border in Germany or France?

Many Basel residents take advantage of the opportunity to shop in neighbouring countries (tram line 3 to France or line 11 to the French border; tram line 8, bus lines 38 and 55 and train S6 to Germany).

This adds to what's available locally and is attractive for the student budget! The Saturday morning market in Saint-Louis is very good for fruit & vegetables, cheese, fresh bread, etc.

# Where to eat & drink in Basel?

Basel has a wide range of restaurants with food from all over the world. You can always find something suitable – even for a more limited budget.

## **Sandoase**

Beach feeling in summer with palm trees, sand, water, cocktails and delicious burgers! ↗ [Website](#)



## **Markthalle**

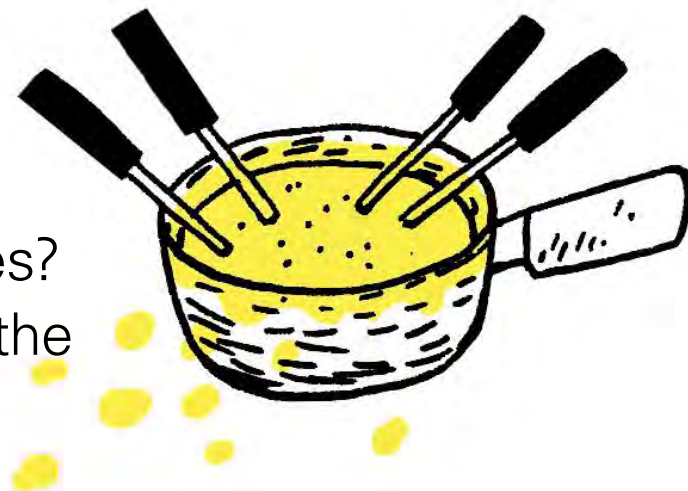
In the old market hall under the big dome you will find food stalls with dishes from all over the world. A great place to get together with friends. Everyone will find what their stomach desires! ↗ [Website](#)

## **KLARA**

Nine kitchens, one bar! KLARA is a place to meet friends, have lunch and get to know new people. ↗ [Website](#)

## **Gabri's Pasta**

Fine pasta and delicious ice cream! A cosy restaurant with Italian charm. ↗ [Website](#)



## **Walliser Kanne**

Looking for Swiss specialities? Try a Fondue or Raclette at the Walliser Kanne. ↗ [Website](#)

# Where to eat & drink across the border?

It can be cheaper to eat out across the border in France or Germany. There are a lot of places in Saint-Louis, Huningue, Weil am Rhein and Lörrach, as well as other villages.

## **1456 Arber**

Great burgers in Germany. ↗ [Website](#)

## **Oishii Sushi & Grill**

Sushi in Germany. ↗ [Website](#)

## **Sushi's**

Sushi in France. ↗ [Website](#)

## **El Gaucho**

Fine steaks in Germany. ↗ [Website](#)

## **Pizzeria Artischocke**

Pizzas in Germany. ↗ [Website](#)





## What can I do in my free time?

Basel is not only rich in culture but also offers many other leisure opportunities. Day trips to cities such as Zurich, Bern and Lucerne are easy thanks to good public transport connections.

In addition to internationally renowned cultural institutions such as the Stadttheater (Basel Theatre), the Basel Art Museum and the Fondation Beyeler, there are countless smaller museums, theatres, restaurants, bars, discos etc. to enjoy.

Some of the museums offer a happy hour: the last hour in the day is free. Some museums can be visited for free on the first Sunday of the month. This offer applies for example to the Historical Museum, the Art Museum, the Natural History Museum and the Museum of Cultures.

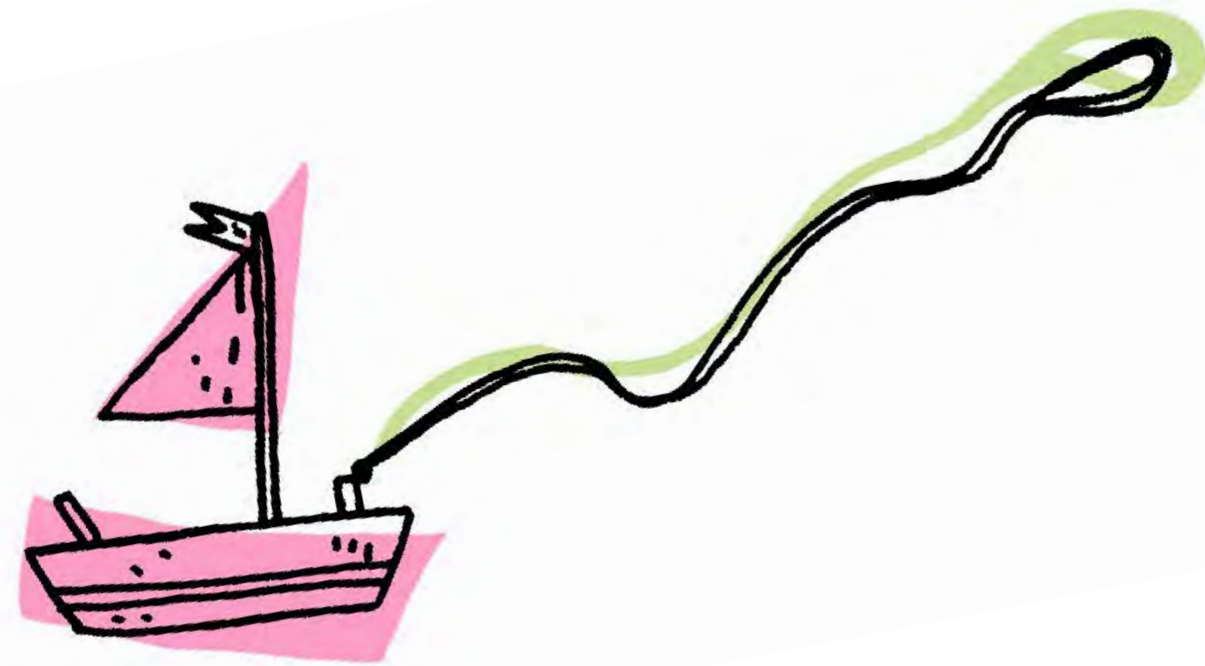
↗ [Website](#)

Basel's cinemas are very popular. You can find the current programme at the ↗ [Website](#).

Basel Tourism ↗ [Website](#)

Basel nightlife ↗ [Website](#)





## Enjoy the summer at its best

Basel offers many opportunities to enjoy the summer. With festivals, street parties as well as open-air music and cinema, the city shows its full potential at this time of year. The Rhine promenade with its various bars and restaurants invites you to swim, relax or have a barbecue.

### Rhine swimming

On hot summer days, the clean and refreshing Rhine water beckons! Buy or borrow a Wickelfisch bag and let yourself be carried by the current through the old town. Follow the river safety instructions and the map with the entry and exit points.

↗ [Website](#)

### The “Wickelfisch”

The “Wickelfisch”, a unique Basel invention, is a watertight sack that keeps your clothes dry whilst swimming. You can float along the Rhine without having to leave your clothes behind. They can be bought at the Barfüsserplatz tourist information centre or online.

↗ [Website](#)

### Ferries and ships

Don't feel like walking the long way round to cross the Rhine? Take one of the four ferries, which will transport you comfortably across the river for a small fee (payable directly to the ferryman).

Would you rather take a larger boat? Basler Personenschiffahrt offers various boat tours, such as Sunday brunch, a romantic dinner or a sightseeing tour in the afternoon.

↗ [Website](#)

### FLOSS

For many years the FLOSS festival has been bringing Mediterranean flair to summers in the city. The raft – as it's called by the natives – is a floating stage topped by a large sail. Only the river is between the artists and the audience. The river and the good times flow ... ↗ [Website](#)

### Parks

Thanks to its many parks, tree-lined avenues and gardens, Basel is a leafy city. These green spaces are great places to walk and linger in the summer months. ↗ [Website](#)

### Barbecues

In summer, the people of Basel are drawn outside to the barbecue! Popular barbecue locations can be found along the Rhine, at the Birsfelden power station, at the Birschöpfli or at Lange Erlen in the meadow in the middle of the forest.



# Wrap up in the autumn and winter months



During the cold season, much of life takes place indoors. People enjoy a tour of one of the many museums, warm up with a cup of coffee or tea in a café or stroll among the stalls at the autumn fair or the Christmas market.

## **Herbstmesse**

The Basel Autumn Fair is the biggest and oldest fair in Switzerland. In October and November numerous stalls and funfairs are set up all over the city.

↗ [Website](#)

## **Christmas Market**

Basel's Christmas market is one of the largest and most beautiful in Switzerland. Barfüsserplatz and Münsterplatz are transformed into a Christmas wonderland in December. Enjoy a mulled wine or a fondue at one of the many stalls.

↗ [Website](#)

## **In the snow!**

The very cold winter days mean heading off to the ski slopes, the ice rink or the toboggan run! In Switzerland, outdoor activities such as hiking in the mountains, skiing and much more are very popular. The Alps can be reached within a few hours.

In winter, Swiss Railways (SBB) offer special packages that include a return trip, an overnight stay and ski lift tickets in various ski resorts. You can find more information on the ↗ [Website](#)

## **Museums Night**

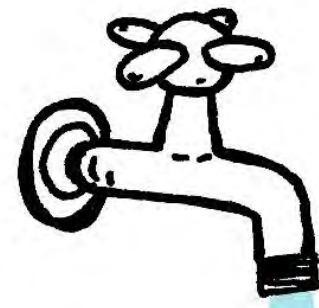
The Basel Museums Night takes place every January. Take a nocturnal stroll and buy a single ticket that for one night gives you access to around 200 events in 38 museums and cultural institutions in Basel, Münchenstein, Riehen, St. Louis and Weil am Rhein.

↗ [Website](#)

## **Fasnacht**

Every February, Basel is in a total state of uproar for three days each year. The people of Basel speak of the "drey scheenschte Dääg" (the three most beautiful days)! With colourful costumes and masks, piccolos and drums, individuals and groups parade through the streets and alleys of Basel. The Basel Fasnacht is known as the biggest folk festival in Switzerland.

↗ [Website](#)



## Good to know

### **Can I drink the tap water?**

In Switzerland, tap water in your flat or student room, in public buildings and from the numerous drinking fountains can be drunk without hesitation; it meets the strictest hygiene and safety guidelines.

### **Do you need someone you can talk to?**

The following three contact points offer professional counselling and support for personal problems or concerns:

– 143.ch

P 0800 143 000

↗ [Website](#)

– Mein Ohr für Dich

P 0800 500 400

↗ [Website](#)

– Psychological Counselling  
Centre FHNW

↗ [Website](#)



### **How do I throw rubbish away?**

In Switzerland, a fee is charged for waste disposal. In some places you have to buy a specific waste bag (e.g. the “Bebbi-Sagg” in Basel) or a sticker to put on a rubbish bag. This varies from place to place. Find out more about this at your place of residence! The waste sacks or stickers can be bought from supermarkets. The Swiss are efficient and conscientious about recycling. They have myriad rules and regulations for disposing of various types of materials. Recycling collection points for glass, plastic, aluminium, textiles and batteries are widely available.



# Student Life

3



## Where will I study?

### **FHNW MuttENZ Campus**

Some 4500 people study, conduct research and work at the FHNW MuttENZ Campus. The FHNW School of Life Sciences provides a first-rate academic environment with state-of-the-art research facilities and a modern infrastructure. The spacious and attractively designed campus park with its broad selection of cultural and sporting activities provides students and staff with excellent opportunities for leisure and recreation. The campus also benefits from a library and restaurant (both open to the public), a canteen and lounge.

↗ [Website](#)



Your FH-card gives you round the clock access to the campus building.

→ [More about your FH-Card](#)

To help find your way round the building, it is divided into the four points of the compass. All rooms are systematically numbered: floor, direction, room number.

## How do I get there?

The FHNW MuttENZ Campus is well served by public transport:

### **By train**

From MuttENZ train station a six-minute walk via Hofackerstrasse or Grenzacherstrasse and through the campus park.

### **By bus**

Bus 47 or 63 to the "Fachhochschule" stop.

### **By tram**

Tram 14 to "Zum Park", then a 10-minute walk via Zwinglistrasse and Kriegackerstrasse.

### **By bike**

More than 500 covered and open cycle parking spaces are available on Campus.

→ [To "How to get around"](#)

→ [To "Map"](#)

## IT Services

All FHNW students receive an e-mail address ending with @students.fhnw.ch. If you are doing your Bachelor's or Master's thesis or an internship with us, your email address will end with @fhnw.ch.

### WLAN

Eduroam (education roaming) is a global network that enables people at higher education institutions to access the internet from their current campus. This means that next time you visit another university, you will be able to use their campus network without any problems. Simply connect to the eduroam WLAN and follow the instructions.

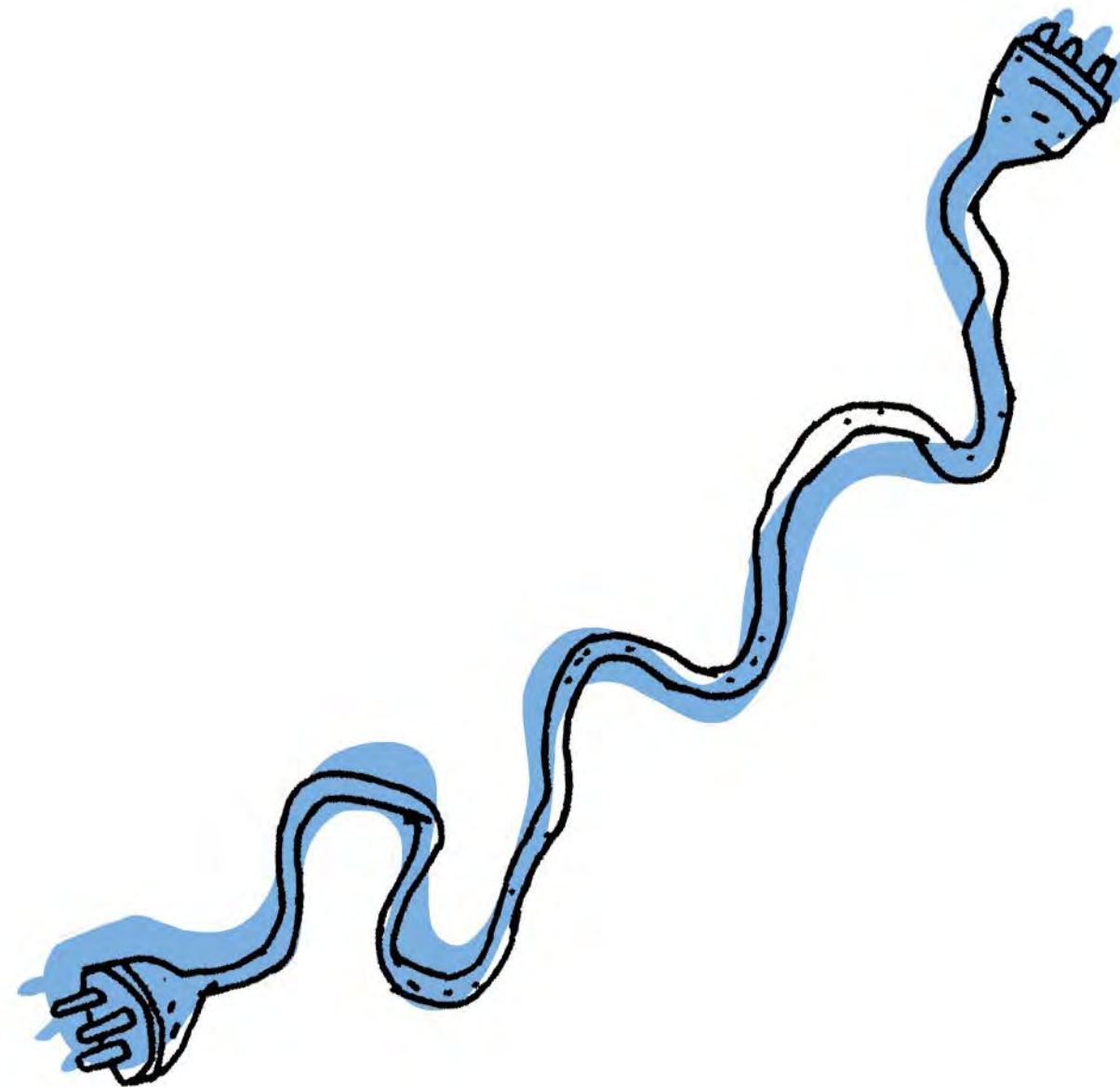
Problems with your laptop or need IT Support? Contact the IT Service Desk on the 9th floor (09.W.01).

P +41 61 228 50 50

M [it-support@fhnw.ch](mailto:it-support@fhnw.ch)

## Library

The library is a public university library located on the 3rd floor. It provides specialist literature and journals, access to electronic books, journals and specialist databases, teaching aids and teaching materials. Use of the library is free of charge. In addition to the physical stock, it offers a wide range of electronic resources (e-books, e-journals, databases). Via the platform swisscovery: ↗ [Website](#) you have access to the entire scientific media stock of Switzerland. ↗ [Website](#)



## Medical assistance on Campus

First aid dispensers are available throughout the campus, for example there is a first aid cabinet by the main entrance and the south side lifts. Injured people can be accommodated in first-aid rooms (U2.O.9 and 07.O.08). In case of an emergency please report to the reception. For more serious events, dial 112.

If you need psychological support, please contact the Psychological Counselling Center FHNW.

↗ [Website](#)

## Where can I study?

At the FHNW Campus MuttENZ you have many places where you can study. Here are a few:

- In the library with meeting areas
- In the lounge
- In the cafeteria
- In the meeting rooms and classrooms during the non-teaching period or as an open workplace depending on the project. Reserve your room max. 24h in advance.

↗ [Website](#)

## How to print?

Printers are available throughout the campus. Use your FH-Card to pay for copying and printing. For larger formats (maximum A1 landscape / A0 portrait) use the two large format printers on the 7th floor (room 07.M.02) and 11th floor (room 11.M.16).



## Smoking areas

Smoking (including e-cigarettes or vaporizers) is prohibited in the entire building.

## Lockers

There are a total of 950 lockers in the building; just find an unoccupied one. You need to provide your own padlock.

# Food and Drink on Campus

With the campus restaurant on the ground floor, the canteen on the gallery floor and the lounge (with entrance to the roof garden) on the 12th floor, the FHNW Campus MuttENZ offers very attractive catering options for students, staff and visitors. You can pay with FH-Card, cash or credit cards in all three facilities, although the discounted price for students and staff only applies with the FH-Card. They serve different lunch menus (meat & vegetarian), salads, sandwiches, burgers, desserts and more at affordable prices.

You can heat your own meals in the microwaves in the canteen and in the 12th floor lounge.

There is a Coop supermarket on the ground floor of the building.



## Food and Drink around the Campus

As well as the in-house catering, there are also eating options outside the FHNW campus:

### **Restaurant Käppeli Imbiss**

Hofackerstrasse 15  
↗ [Website](#)

### **Bea`s Imbiss**

Hofackerstrasse 79  
↗ [Website](#)

### **Yok Yok Döna Budde**

Hofackerstrasse 46

# FHNW Sports

Would you like to do acrobatics to Brazilian music, go off-piste in deep powder snow or bring your body into equilibrium?

The FHNW sports programme includes an attractive and varied programme with workshops, competitions, regular training sessions and tournaments:

↗ [Website](#)

The MuttENZ campus gym has a good selection of fitness and cardio equipment, weights machines and a small free weights area. To use the gym, you need a half-year or full-year subscription, which you can buy at the reception.

As an FHNW student you are also eligible to take part in the sports programme of the University of Basel. ↗ [Website](#)



## FH-Card

The FH-Card will be sent to your Swiss address in advance or given to you by the supervisor on your first day. Your FH-Card serves as your key, library card, copy card and as a means of payment for the Restaurant & Lounge and the canteen.

How do I load money on my card? You can either use the cash loading station in the foyer (at the entrance on the left) or the Polyright Cashless web platform. On the platform, you can check your current balance, block your card if you lose it and top up with your credit card: ↗ [Website](#)



## Good to know



### **Language Courses**

FHNW offers German and English language courses. If you are interested, please contact the international office ([international.lifesciences@fhnw.ch](mailto:international.lifesciences@fhnw.ch)). FHNW students also have access to the Language Centre of the University of Basel: ↗ [Website](#)

### **Grading System**

Degree programmes use the European Credit Transfer and Accumulation System (ECTS). 1 ECTS credit corresponds to a student workload of 25–30 hours. In full-time study, the academic year corresponds to an average workload of 1,800 hours or 60 ECTS credits. Competence acquisition in a module is assessed with one or more achievement certificates. The assessment of the performance records (performance evaluation) is carried out on a scale of 6 or 2. The 2-point scale comprises the levels “fulfilled” and “not fulfilled”, whereas on the 6-point scale 4.0 is the lowest passing grade and 6.0 the highest grade.

### **Student Organisations**

The **Erasmus Student Network** (ESN) is a non-profit network that organizes cultural & social events and informs and supports international exchange students. ↗ [Website](#)  
↗ [Website](#)

### The **Student Association Life Sciences** (Fachschaft Life

Sciences) represents and supports nearly 800 students at the FHNW Campus Muttenz. They organise events throughout the year to bring students from different degree programmes together and create a welcoming campus community. As an international student, you're very welcome to join their activities – it's a great way to meet new people and get involved in student life. Follow them on Instagram: ↗ [@fachschaft\\_lifesciences](#)

### **FHNW Welcome Days**

At the beginning of each semester, FHNW invites all international exchange students to the Welcome Days, which introduce them to Swiss culture, economy, politics and social structures. In addition, they are a wonderful opportunity to get to know other students. Please contact the international office ([international.lifesciences@fhnw.ch](mailto:international.lifesciences@fhnw.ch))

### **Buddy Programme**

All international exchange students at FHNW can benefit from having a buddy. The buddies are experienced FHNW students who are familiar with the university and everyday life in Switzerland and can provide helpful information. Registration for a buddy is done through Mobility-Online. The Buddy Programme is organised by the Erasmus Student Network (ESN).

### **WhatsApp group for international students @ HLS**

The WhatsApp group for our international students allows easy communication between the international office and international students, as well as amongst the students themselves. Questions can be answered quickly and informal get-togethers can easily be set up. If you want to join, please send your mobile phone number to [international.lifesciences@fhnw.ch](mailto:international.lifesciences@fhnw.ch).

# Appendix

4



# Useful Addresses

## International Office

04.O.09

P +41 61 228 50 66

M [international.lifesciences@fhnw.ch](mailto:international.lifesciences@fhnw.ch)

## Student administration

07.O.09

P +41 61 228 50 77

M [studierendenadministration.lifesciences@fhnw.ch](mailto:studierendenadministration.lifesciences@fhnw.ch)

## IT-Service desk

09.W.01

Opening times:

Mon – Fri 07:00 – 18:00

P +41 61 228 50 50

M [it-support@fhnw.ch](mailto:it-support@fhnw.ch)

## Reception

On the ground floor

Opening times:

Mon – Fri 07:00 – 18:00,

Sat 7:30 – 14:00

P +41 61 228 55 55

M [empfang.muttenz@fhnw.ch](mailto:empfang.muttenz@fhnw.ch)

## Library

Opening times:

Mon – Fri 8:00 – 19:00

Sat 8:00 – 14:00

P +41 61 228 50 40

M [bibliothek.muttenz@fhnw.ch](mailto:bibliothek.muttenz@fhnw.ch)

# Map

**n|w** University of Applied Sciences and Arts  
Northwestern Switzerland

**FHNW University of Applied Sciences and Arts  
Northwestern Switzerland  
FHNW Campus Muttenz**

Hofackerstrasse 30  
4132 Muttenz

T +41 61 228 55 55  
[empfang.muttenz@fhnw.ch](mailto:empfang.muttenz@fhnw.ch)  
[www.fhnw.ch](http://www.fhnw.ch)

### Arriving by public transport

#### A From Muttenz railway station

A six-minute or so walk via Hofackerstrasse or Grenzacherstrasse and through the campus park

#### B Bus 47 (from Bottmingen) or 63 (from Dornach) to the 'Fachhochschule' stop, then a two-minute walk

#### C From the 'Zum Park' tram stop in Muttenz

Tram 14 from Basel and Pratteln, then a 10-minute or so walk via Zwinglistrasse and Kriegackerstrasse

### Arriving by road

● Hagnau junction, A18 towards Delémont then Muttenz-Nord exit

P Parking Münsterareal

Walking route from train/tram - - - - -

Published in March 2021



# Checklist

## Before arriving in Basel

- Arrange accommodation.
- Passport (incl. copy of the page with your photo and personal data).
- Visa.
- Confirmation of registration from the FHNW School of Life Sciences.
- European Health Insurance Card (EU / EFTA citizens).
- Check with your current health insurance company about health insurance in Switzerland.
- Liability insurance certificate, if available.
- Proof of funds: either a letter of confirmation from your parents or a bank statement.
- Passport photos.
- Notify the International Office of your address in Switzerland and the date of your arrival.

## After arriving in Basel

- Meet the International Office for the introductory meeting (exchange students only).
- Register with the relevant local authority (within 14 days of arrival).
- Take out a health insurance policy or arrange the exemption.

## Before leaving Switzerland

- Meet the International Office for the final interview (exchange students only).
- Inform the Student Administration Office of your address abroad so that the Transcript of Records can be sent to you.
- Cancel your tenancy agreement.
- Cancel all insurance contracts.
- De-register with the relevant local authority (this is especially important if you want to return at a later date).



## Useful Links

### **Welcome to the FHNW School of Life Sciences**

↗ [Website](#)

### **Study in Switzerland**

Useful information for international students about living, studying, universities.

↗ [Website](#)

### **Basel Tourism**

↗ [Website](#)

### **Switzerland Tourism**

↗ [Website](#)

### **SwitzerlandMobility**

A free platform for creating an active leisure programme.

↗ [Website](#)

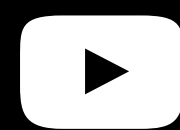
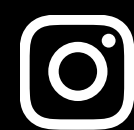
### **SWI**

Swiss information and news channel in 10 different languages.

↗ [Website](#)



Keep in  
touch?



Editor: FHNW School of Life Sciences,  
International Office  
Design: FHNW Academy of Art and Design,  
AnDiCo Lab  
Version: April 2026

Photography credits: Gataric-Fotografie; Basel  
Tourismus; Adobe Stock – stock.adobe.com  
(Bennymarty; Andiz275; Peeradontax;  
icephotography; ARochau; petunyia; oneinchpunch).

The content of this document is for information  
purposes only. We reserve the right to make  
changes and adjustments. In case of incomplete  
or incorrect information please contact:  
international.lifesciences@fhnw.ch  
We appreciate and value your feedback.