

BSc Business Administration (International Management) Degree Programme

Information

Dr. Anna Caroni

anna.caroni@fhnw.ch



Welcome!



Prof. Dr. Anya Nikoulina
Programme Head / Lecturer
anya.nikoulina@fhnw.ch



Dr. Anna Caroni
Programme Manager / Lecturer
anna.caroni@fhnw.ch



Admissions Office
+41 62 957 20 70
admission.business@fhnw.ch

FHNW School of Business

7 **Degree programmes**
in the fields of management
or business information systems

5 **International Student Projects**
In China, India, ASEAN,
North and South America

3 **Study modes**
Full-time, part-time or
combi study track
(on-site/online)

500 **Student projects**
Solutions for companies and
organisations

3 **Campuses**
Basel, Olten and
Brugg-Windisch

86 **Faculty lecturers
and professors**

Our Locations



Why Choose our School of Business?



**Flexible Study Options
& Opportunities to
Choose 1/3+ of Courses**



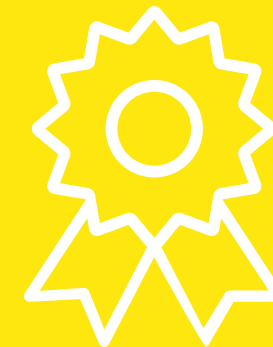
**Knowledge &
Applied Skills**



**International
Experience**



Networks



**AACSB
Accredited**

Our Bachelor Programmes

**Tuition
language
German**

Wirtschaftsrecht

Campus: Brugg-Windisch

fhnw.ch/wirtschaftsrecht-studieren

Business Artificial Intelligence

Campus: Olten

fhnw.ch/bai-studieren

Betriebsökonomie

**Campus: Basel,
Brugg-Windisch or Olten**

fhnw.ch/boek-studieren

Wirtschaftsinformatik

Campus: Olten

fhnw.ch/wi-studieren

Our Bachelor Programmes

**Tuition
language
English**

**Business Administration
(International Management)**

**Campus:
Brugg-Windisch or Olten**

fhnw.ch/study-im

**Business Information
Technology**

**Campus:
Basel or Brugg-Windisch**

fhnw.ch/study-bit

**International Business
Management (trilingual)**

**Campus:
Basel, Colmar and Lörrach**

fhnw.ch/study-ibm

BSc International Management



Knowledge of Business
Administration
International Business Focus



International Experience
Global Mindset
Intercultural Competencies



Communication Competencies
Digital Skills
English + Foreign Languages

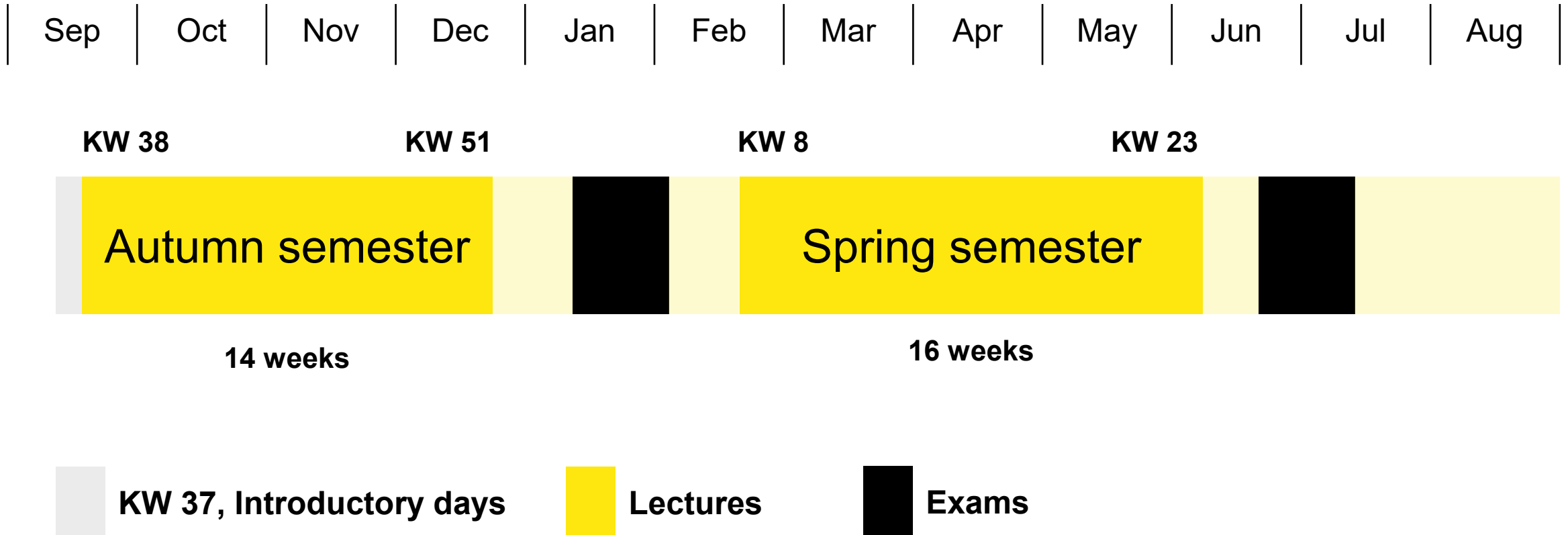


Wide Range of Electives
Choice of Specialisations
Networking Opportunities

Curriculum Structure & Study Options



Academic Year



Study Structure Business Administration (IM), Full-Time

Part-time in 8 semesters

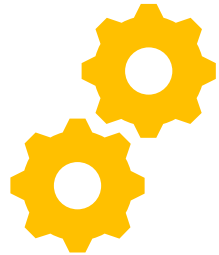
Semester 1	Semester 2 – 6
<ul style="list-style-type: none"> - Principles of Management - Applied Math 1 - Financing Accounting - Academic Writing - Organisational Behavior - Statistics 1 - Business Ethics & Sustainability 	<div>Specialisation</div> <div>Core Modules - e.g. International Management, Digital Business, Finance, Marketing, Company-Based Project, HRM...</div> <div>Electives – e.g. Foreign Languages, Culture, History, Politics...</div> <div>Business Electives– e.g. Leadership, Merger & Acquisition, Cross-Cultural Management, Social Innovation, International Student Projects...</div>
Assessment	Main Study

Curriculum Overview FT

Part-time in 8 semesters

Sem 6	Bachelor Thesis (12)		Strategy & Leadership (3)	Specialisation Module (6)		Specialisation Module (6)		Context (3)
Sem 5	Company-Based Project (6)	Business Processes and Transformation (6) or Business Analytics	Supply Chain Management (3)	Specialisation Module (6)		Specialisation Module (6)		Context (3)
Sem 4	Applied Research Methods & Research Paper (6)	Microeconomics (6)	Innovation Management (3)	Specialisation Module (6)		Specialisation Module (6)		Context (3)
Sem 3	Business Analytics (6) or Business Processes & Transformation	Macroeconomics (6)	Corporate Finance (6)		International Business (3)	Organisational Change (3)	Corporate Communication (3)	Context (3)
Sem 2	Marketing (6)	Foundations of Digital Business (6)	Business Law (3)	Management Accounting & Controlling (3)	Applied Mathematics 2 (3)	Statistics 2 (3)	Human Resource Management (3)	Business Communication (3)
Sem 1	Principles of Management (6)	Financial Accounting & Reporting (6)	Critical Thinking & Academic Writing (6)		Applied Mathematics 1 (3)	Organisational Behaviour (3)	Statistics 1 (3)	Business Ethics and Sustainability (3)

BSc IM Study Tracks



Full-Time Track
On Campus



Part-Time Track
On Campus



Part-Time Flex
Campus, Online, Self-Study

Timetable

CAMPUS OLTEN

Part-Time Monday 8:15-17:00 & Thursday 8:15-17:00 & Saturday – reserve day

Part-Time Flex Monday 8:15-17:00 CAMPUS & two evenings 17:30-21:00 ONLINE & Saturday – reserve day

Full-Time Monday to Friday between 08:15-17:00

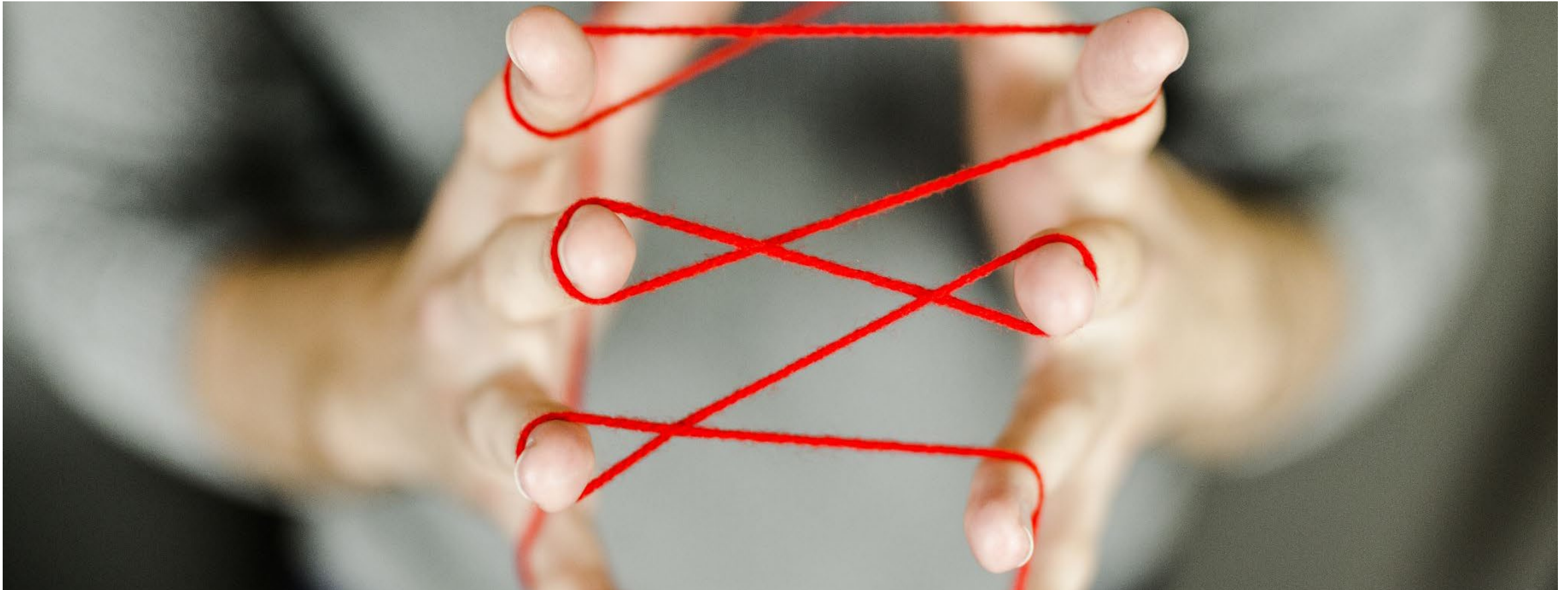
CAMPUS BRUGG-WINDISCH

Part-Time Tuesday 8:15-17:00 & Thursday 8:15-17:00 & Saturday – reserve

Part-Time Flex Tuesday 8.15-17.00 & two evenings 17:30-21:00 ONLINE & Saturday – reserve day

Full-Time Monday to Friday between 08:15-17:00

Specialisations



Specialisations

NEW Sustainability Management
NEW Politics, Business, and Society

Subject to change

Banking and Finance

Business Innovation

Compliance Management

Corporate Communication

Digital Business

Economic Psychology

Entrepreneurship

Financial Management and Auditing

Financial Management and Controlling

Financial Management and Fiduciary Services

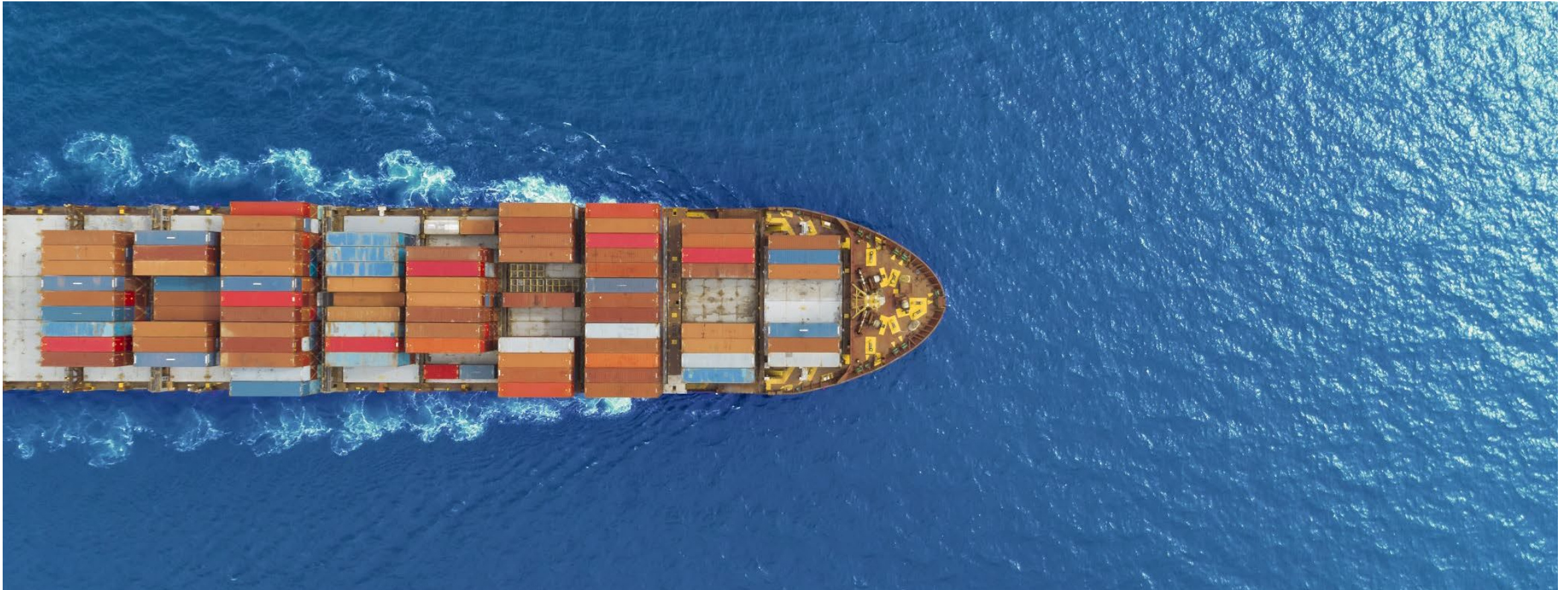
HRM & Change

International Financial Management

Managerial Data Science

Marketing

International Experience



International Experience

Students must complete International Experience
(26 ECTS):

- International Exchange Semester (Sem. 3/Sem. 4)
- Double Degree
- International Projects Insight China, connectUS, Focus India, exploreASEAN, HOLATAM
- International Electives SEED, Poland Study Trip...
- Summer School e.g. Innovation School
- Foreign Language Courses (min. 6 ECTS)



Subject to change

International Experiences

Explore...Focus...Insight...Connect



Double Degree Opportunities

School of Business offers limited double degree opportunities to highly motivated students.

Double Degree students receive a diploma from FHNW and a Bachelor of Business Administration Diploma from the partner university.

Metropolia University of Applied Sciences Finland: <https://www.metropolia.fi/en>

British Columbia Institute of Technology: <https://www.bcit.ca/>

Hong Kong Baptist University: <https://www.hkbu.edu.hk/>

Northumbria University UK: <https://www.northumbria.ac.uk>

Beijing Foreign Studies University : <https://en.bfsu.edu.cn/>



Student Learning Support

Student Life on Campus



Student Support

Assessment Semester Support

- Financial Accounting Tutorials
- Mathematics Tutorials

Student Learning Support throughout your Studies

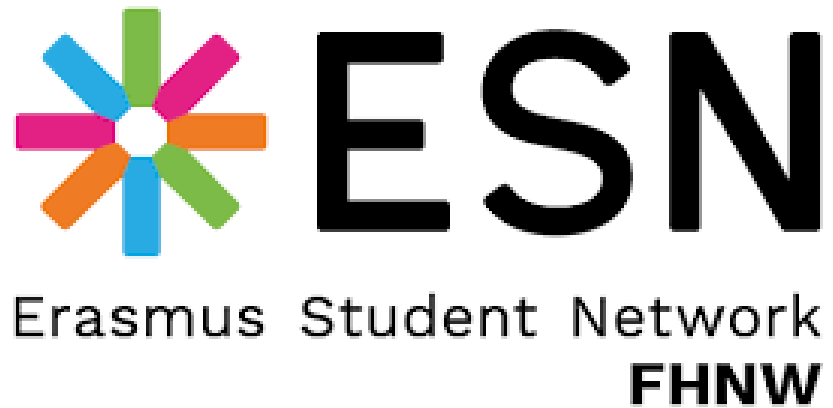
- Writing Hub: Support in Academic Writing
- Methods Lab: Research Support
- Student Counselling

→ Services are free of charge to all students

→ Additional support may be offered by the Students Council and other Student Organisations

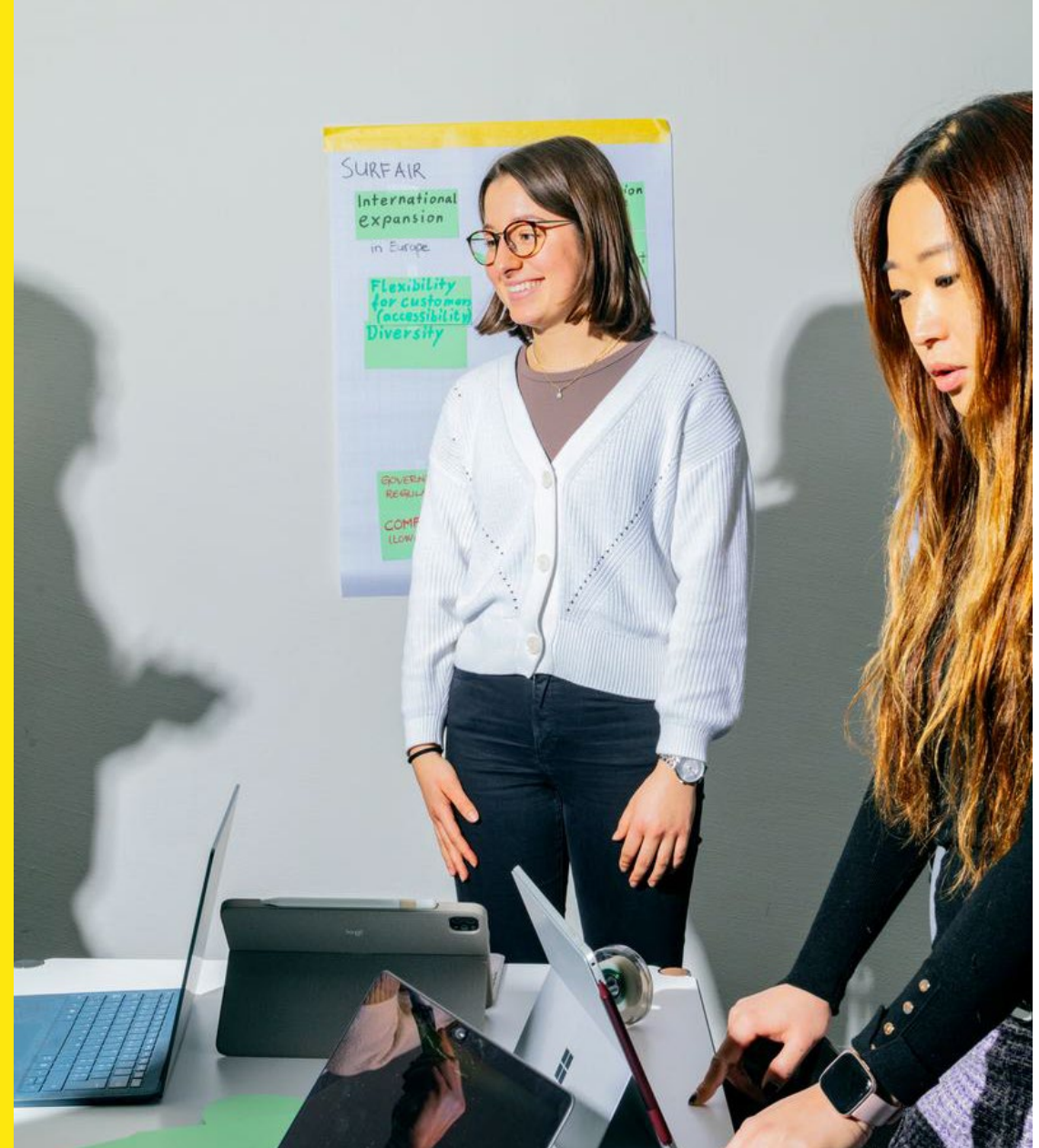
next CAREER
SERVICES

Student Life

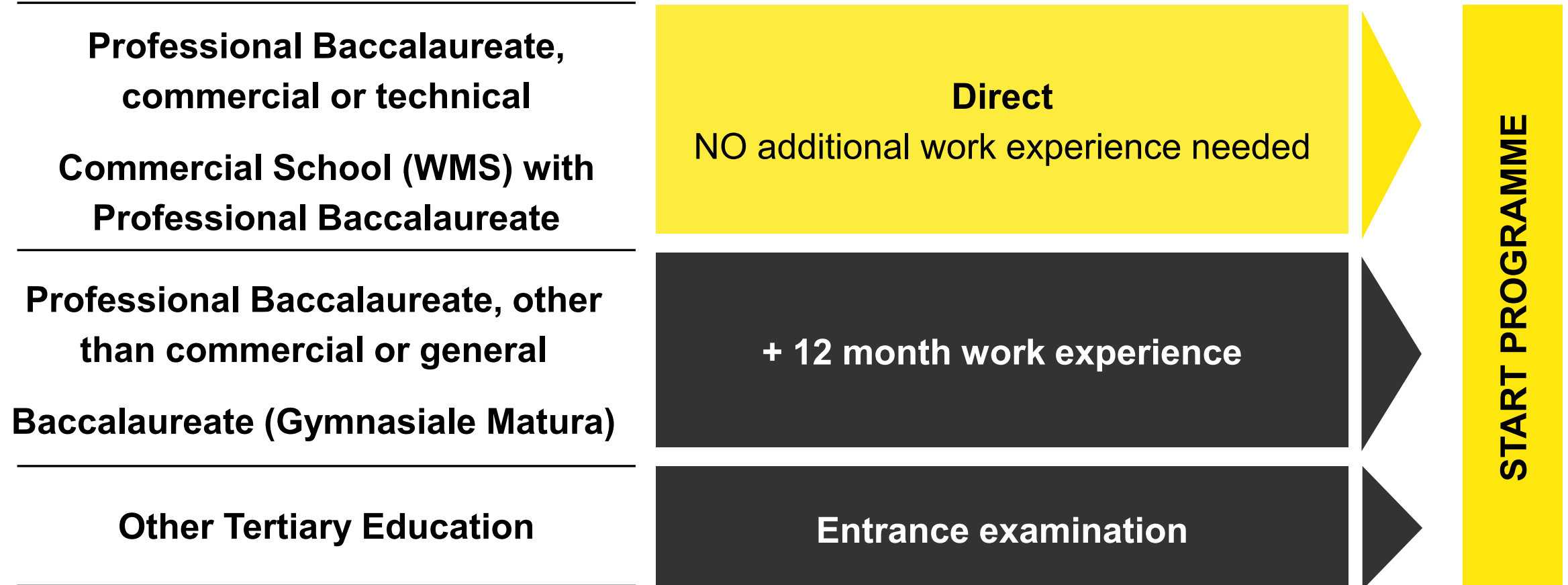


How to Apply

23.10.2024



Admission



Q&A

