



## General Information

### Name of University

University of Applied Sciences and Arts  
Northwestern Switzerland – School of  
Business

Fachhochschule Nordwestschweiz  
(FHNW) - Hochschule für Wirtschaft

### Erasmus Code

CH Brugg02

### Homepage

[https://www.fhnw.ch/en/degree-  
programmes/business](https://www.fhnw.ch/en/degree-programmes/business)

### Semester Dates

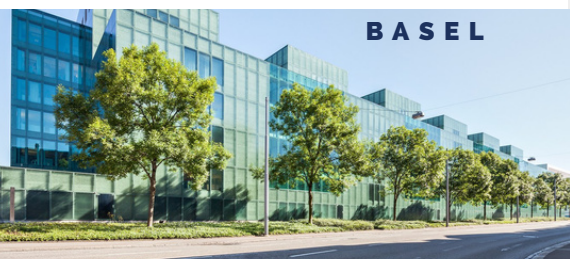
Autumn: September - January  
Spring: February - June

### Accessibility

Wheelchair accessible

## Course Offer

To know more about your most suitable study  
programme and the course offers, please  
check out our [Study Information](#).



## International Office

### International website:

[https://www.fhnw.ch/en/degree-programmes/business/international-  
experience/offers-for-incoming-students](https://www.fhnw.ch/en/degree-programmes/business/international-experience/offers-for-incoming-students)

 @fhnw\_global\_business

 @fhnwbusinessIO

 **E-Mail:** io.business@fhnw.ch

### Head International

Prof. Dr. Markus Melloh  
head-international.business@fhnw.ch

### Executive Assistant International Relations

Daniela Paltzer  
daniela.paltzer@fhnw.ch

### Executive Assistant International Office

Franziska Frei  
franziska.frei@fhnw.ch

### International Office and Double Degree Coordinator

Irene Diez  
irene.diez@fhnw.ch


### Incoming Student Service Assistant


All three campuses  
Dimitra Andreou  
dimitra.andreou@fhnw.ch

### Power User Mobility-Online

Daniel Hertig  
daniel.hertig@fhnw.ch


### Academic Advisor Exchange


 Campus Basel  
Prof. Claudia Thali  
claudia.thali@fhnw.ch


 Campus Olten  
Mar Escorza Vera  
mar.escorzavera@fhnw.ch

 Campus Brugg - Windisch  
Prof. Antje Leukens  
antje.leukens@fhnw.ch

### International Office Administrators

 Campus Basel  
Mirjam Beer  
mirjam.beer@fhnw.ch

 Campus Olten  
Pavel Somogyi  
pavel.somogyi@fhnw.ch

 Campus Brugg - Windisch  
Celia Schwarz  
celia.schwarz@fhnw.ch

## Nomination and Application Procedure

Applicants must have completed at least one academic year on a bachelor's level. Further students must be officially nominated by their home university and must submit the application dossier within the deadline. Once nominated students will receive an e-mail inviting them to apply.

A study programme of at least **15 ECTS per semester** is required by our university.

**1. Step:** Student nomination (only from partner universities) via Mobility-Online (MO)

**2. Step:** Online application on Mobility-Online

**Application Deadline:** Autumn semester: May 30  
Spring semester: November 30

**3. Step:** Acceptance e-mail and Letter of Acceptance

**4. Step:** SEMP/FHNW worldwide support application (available on MO)

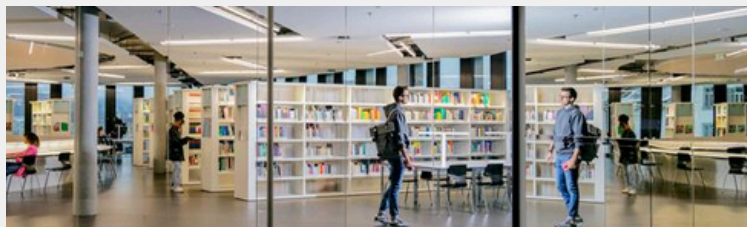
**5. Step:** Plan your arrival (all students are expected to arrive before the mandatory Info Session Day)

## 📄 Visa

Non-EU/EFTA citizens will need to apply for a student visa shortly after receiving their acceptance email.

A residence permit is needed for EU and for non-EU/EFTA citizens. All exchange students must apply for a residence permit upon arrival. Students from Australia, Japan, New Zealand, Malaysia, Singapore and the United Kingdom do not need a visa, but they must apply for a residence permit.

For further information, please check this [website](#).



## 💰 Cost of Living

### Approximate Expenses (all prices in Swiss Francs)

Accommodation	600-900	CHF/month
Food	400-600	CHF/month
Transportation	150-200	CHF/month
Health insurance (swisscare)	65-80	CHF/month
Other expenses	200-300	CHF/month

**Total per month:** 1,415-2080 CHF

## 🏠 Grants

**Erasmus+ Programme:** exchange students from a European partner university studying and living in Switzerland may be eligible to receive a SEMP grant from the Swiss Government.

**Rest of the World:** exchange students from a non-Erasmus+ programme country partner university may be eligible to receive a FHNW worldwide support of max. CHF 2500.- \*\*With the possibility to receive a full academic year grant. Limited places (first-come, first-served).

**Costs for special Needs:** Students with disabilities can claim costs related to their disability and incurred due to mobility, e.g., special transport. The final reimbursement is made according to effective costs as supporting documents.

Further information will be provided after the acceptance procedure. General information is available on our [website](#).

## Student Council, ESN FHNW & Buddy System

At the FHNW there is a strong presence of student organisations. The FHNW has several student organisations such as the Student Council and the Erasmus Student Network (ESN) FHNW. Local students run these organisations on a voluntary basis and organise activities, trips, the buddy system and social events for and with exchange students throughout their stay at our university.

## Locations

**Campus Basel**  
Peter Merian-Strasse 86  
4002 Basel

**Campus Olten**  
Von Roll-Strasse 10  
4600 Olten

**Campus Brugg-Windisch**  
Bahnhofstrasse 6  
5210 Windisch



## 🗨️ Language Requirements

To apply as an exchange student, students must fulfill our language requirements:

### For Degree Programmes and Courses taught in English

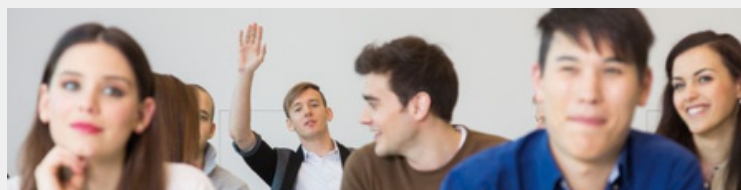
Either a certificate from an acknowledged examiner (one of Cambridge First, Cambridge Advanced, TOEFL iBT 72; TOEIC 785, IELTS 6, ELP B2, Bec Vantage) or a personally signed letter from a lecturer or international coordinator confirming the student has achieved a B2 level in English.

### For Degree Programmes and Courses taught in German

Either a certificate from an acknowledged examiner (e.g. Goethe-Zertifikat B2, telc B2) or a personally signed letter from a lecturer or international coordinator from the home university confirming the applicant has achieved a B2 level in German.

## ❤️ Health Insurance

Basic health insurance that includes accident coverage is mandatory by law for every citizen in Switzerland. Detailed information will be provided on the Info Session Day.



## 🏠 Accommodation

The International Office and/or the Accommodation Officer at the different campuses will assist exchange students to find accommodation.

Accommodation options can be found [here](#).

### Contacts:

📍 Campus Brugg-Windisch  
Celia Schwarz  
celia.schwarz@fhnw.ch

📍 Campus Basel  
Mirjam Beer  
mirjam.beer@fhnw.ch

📍 Campus Olten  
Ishrat Butt  
ishrat.butt@fhnw.ch