

London Trip, 9th - 11th of January

London is the capital of Great Britain and the city has a population of 7 million people and an area of 1596 square kilometres. From Monday January 9th until Wednesday January 11th our class went to London for sightseeing, to visit the British Museum, New London Architecture, the British Library and the Royal Observatory in Greenwich. Because of that, our anticipation was immense.

At 7 o'clock in the morning our trip to London started. The whole class took a plane from Basel to the airport Gatwick. We arrived at the Kings Cross St. Pancras Station by the Gatwick Express and bus. Luckily, our youth hostel was very close to this station and we could leave the luggage there. The next meeting was for everyone at the British Museum.

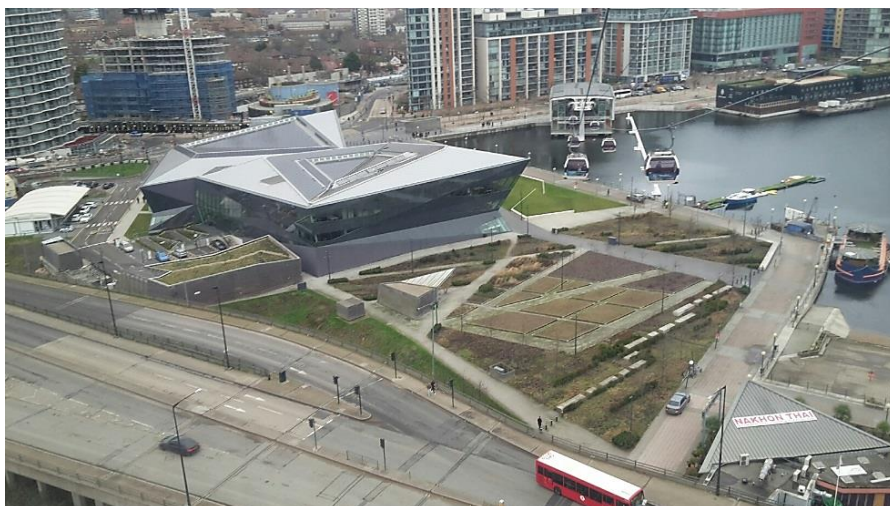
There, we got more travel information from our teachers.

After lunch at an Italian restaurant, we spent a few hours in the museum where we could enjoy the human history, art and culture collection.

At the New London Architecture, we could admire a very big three-dimensional city model of London in scale 1: 2000. The combination of the model and the interesting story behind New London Architecture told by its director was fascinating. The first day in London ended with a special dinner in The Draft House pub. The pub has a very wide range of burgers and beers, so we had a great introduction to British pub culture.



On Tuesday morning, we went all together to the Royal Observatory in Greenwich. The Royal Observatory is an observatory situated on a hill in Greenwich Park. It played a major role in the history of astronomy and navigation, and is best known as the location of the prime meridian. After this interesting tour, we went to the cable car which runs over the River Thames. We had a wonderful view over the skyline of London. The other highlights were of course the well-known sights like Big Ben, Tower Bridge and Buckingham Palace.



Wednesday was a very easy and short day. At 9.15 a.m. until 11 a.m. we visited only the British Library. There, we visited an exhibition of 20th Century Maps. Our task at this exhibition was to answer predefined questions which we will discuss in the 4th semester. The way back to the airport wasn't very relaxed. The Victoria Station was evacuated before we could get into our train. A few minutes later, the station was reopened by security. Fortunately, we were able to continue our journey as planned and we landed in Basel at half past five.

All in all, it was a really fun trip and it also strengthened the cohesion in our class. London has many gorgeous sights and you can walk around many historic places. We would like to thank the school and the teachers for making this trip possible.